



LIBECON

Summary data from LibEcon surveys for the financial year 2001

Data from the recent LibEcon survey covering the years 1997 to 2001 is included in the following summary. Based on returns at 31st July 2003 grossed up for National and Public Libraries and based on initial returns for Tertiary, School and Other Libraries grossed up using the trends for the previous 5 years. This data will be entered in the on-line database by the end of September 2003.

States covered by the survey

States in Central and Eastern Europe:

Bulgaria; Czech Republic; Estonia; Hungary; Latvia; Lithuania; Poland; Romania; Slovak Republic; Slovenia

Member States of the European Union:

Austria; Belgium; Denmark; Finland; France; Germany; Greece; Ireland; Italy; Luxembourg; Netherlands; Portugal; Spain; Sweden; United Kingdom.

Other States within the European Free Trade Agreement:

Iceland; Liechtenstein; Norway; Switzerland.

The data in this Summary includes the above countries to ensure continuity with the previous study. For individual results for all countries and comparative data and tools please see www.libecon.org.

Additional data has or is being collected from the following countries:

Australia; Canada; Japan; Mexico; New Zealand; North Korea; Russian Federation; Turkey and USA

The Sectors included in the LibEcon surveys support the UNESCO classification: ISO 2789

NATIONAL LIBRARIES: typically functioning as a "deposit" library and normally compiling a national bibliography.

LIBRARIES OF INSTITUTIONS OF TERTIARY EDUCATION: primarily serving teaching at the third level or above; may also serve the general public.

PUBLIC LIBRARIES: serving the population free of charge or for a nominal fee.

SPECIAL LIBRARIES: catering for: government; health services; professional associations; industrial & commercial concerns; and other specialised interests.

SCHOOL LIBRARIES: attached to all types of schools and colleges below the tertiary level of education.

See the survey notes of guidance on the website for more in depth definitions of library sectors and survey definitions.

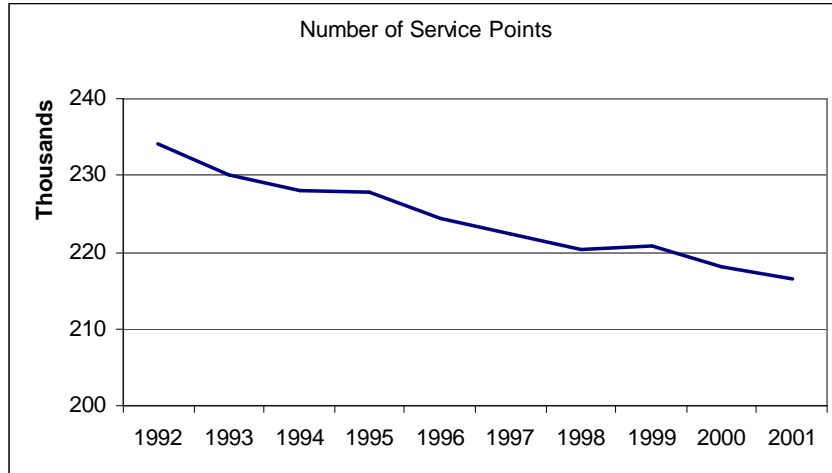
WEBSITE WWW.LIBECON.ORG

OPERATIONAL TRENDS

Service Points, Visits and Transactions

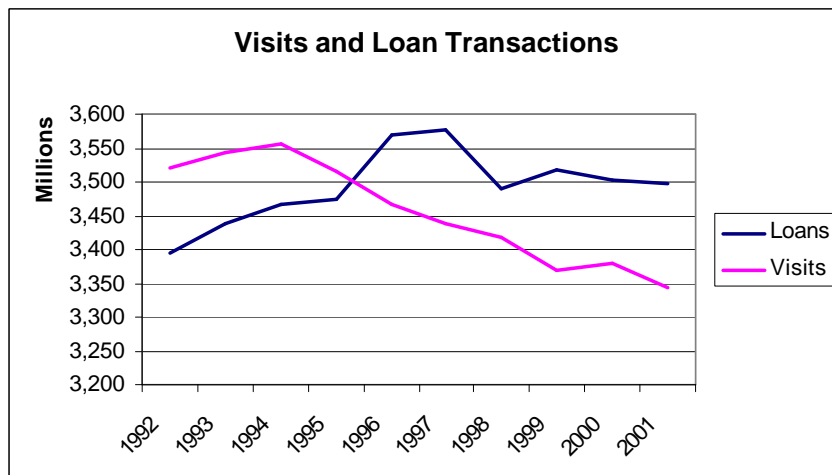
Over all library sectors, it is estimated that the number of service points has continued to contract, throughout the study period.

The rate of contraction has been fairly constant with a slight slowing in the past 5 years. The number of service points fell by 5.0% between 1992 and 1997 followed by a 2.6% fall between 1997 and 2001.



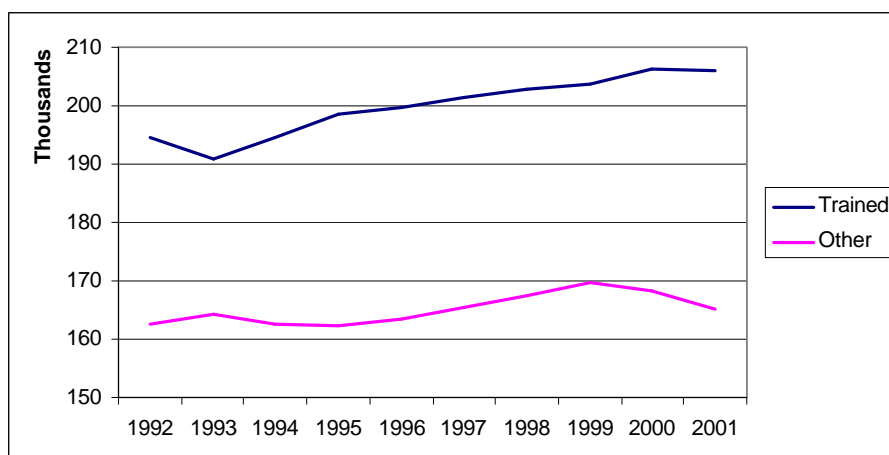
There has been a gradual reduction in the number of visits to libraries over the past 10 years showing an average decline of 0.6% per year.

However there was a general upward trend in the number of loan transactions each year up until 1997 although recent evidence shows that loan transactions are now fairly constant (over the period from 1992 to 2001 loans have increased by an average of 0.3% per year).



There has been a gradual general increase in the number of staff employed in Europe over the past 10 years.

The increase in total is 3.9% with an average annual increase of 0.4%. The number of qualified staff has increased at a faster rate than other staff.



There have only been minor changes in the major stock items of libraries, bookstock, which has increased by 1% in the period from 1997 to 2001. The largest rises in the past 10 years are shown in audio-visual stock (17% increase since 1992) and CD ROMs which have increased by over 400% in the same period. These findings are mirrored in the additions to stock figures.

The modernisation of library stock and services is also shown by the growth in the number of workstations available for users of over 75% from 1997 and nearly 400% since 1992.

RESOURCES	1,997	2,001	Change	Change since 1992
	Millions			
Bookstock	2,851	2,889	1%	4%
Microforms	289	310	7%	8%
Audio-visual materials	113	126	11%	17%
Manuscripts	21.7	23.6	8%	-21%
Periodical – Subscriptions	20.4	20.8	2%	9%
Periodical – Titles	11.9	10.8	-8%	-4%
CD-ROMs	1.9	3.4	78%	444%

ADDITIONS	1,997	2,001	Change	Change since 1992
Book Additions	174.0	172.5	-1%	3%
Audio-visual Additions	11.7	13.4	14%	41%

FACILITIES	1,997	2,001	Change	Change since 1992
	Thousands			
Workstations for users	244	430	76%	367%

Despite the falling number of visitors to libraries the count of registered members has increased by 2.7 million. The proportion of the population this covers is continuing to show a very gradual increase from 28.4% to 28.5%.

	1,997	2,001	Change	Change since 1992
	Millions			
Registered Users	138	141	1.9%	13.3%
Proportion of Population	28.4%	28.5%		

FINANCIAL TRENDS

EXPENDITURE	1,997	2,001	Change
	€ millions		
Staff	6,393	7,914	24%
Acquisition	3,009	3,623	20%
Electronic Info	314	429	37%
Total Expenditure	12,364	15,147	23%
Fees & Other Charges	651	796	22%
Other Income	1,224	1,446	18%

The major rise has been seen in Tertiary Library spending (seeing an annual increase of 7.6%), with public library spending seeing a more modest 5.0% rise. Public libraries expenditure accounts for almost half of all spending on libraries in Europe.

Breakdown of Total Expenditure	2,001	% of total libraries expenditure	Average annual increase since 1997
	€ millions		
National	787	5.2%	4.3%
Tertiary	2,882	19.0%	7.6%

Public	7,169	47.3%	5.0%
School	1,374	9.1%	2.6%
Special & Other	2,935	19.4%	5.1%